

Interfaces

Tool palette

Graphical tool palette makes the software even more user-friendly. The palette can be customized; large or small buttons, displaying all functions or only those essential to navigation, fishing, or the specific task at hand. MaxSea-NavNet can be configured to suit your specific needs:

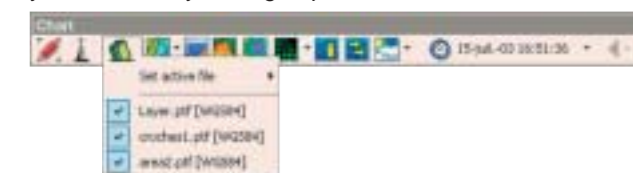
- ▶ according to the conditions onboard (Number of the crew, sea conditions, state of emergency, etc.)
- ▶ according to your skill level, personal preference, and comfort zone.



Activation buttons	Man Over Board		
	Tracking On/Off		
	PBG On/Off (Personal Bathymetry Generator)		
	Zoom In (Radar)		Zoom Out (Radar)
Navigation tools	Zoom In (Chart)		Zoom Out (Chart)
	Change Scale		Pan Charts
	Calculate headings and measure distance		Take bearings
	Create new waypoints		Create new routes
Selection & modification tools	Insert a waypoint or a point		Cut a line in two parts
	Move points		Remove information
	Plot marks/lines		Select a point and get information about that point
Plotting object definition	Choose plotting object type		Choose plotting symbol
	Choose plotting font size		Choose plotting color
	Choose plotting line width		Choose plotting pattern
Additional display options	Day, night, twilight display		Full screen display

Chart palette

A few clicks are all it takes to display the chart in North Up/Course Up modes and to call up weather information, water temperature, currents and tides. All the information you need is at your fingertips.



Nav data window

The transparency and size of the window can be adjusted to enhance the view of the chart behind it. You can even change the size of the numeric data for greater visibility at a distance.



MaxSea-NavNet FEATURES

	Commander	Explorer	Professional
Standard Features			
C-MAP chart sharing capability with NavNet display (NT/NT+NT MAX*)	•	•	•
* Only with NavNet v2 (available summer 2005)			
North Up / Course Up / Head Up	•	•	•
Radar Overlay (NavNet Radar required)	•	•	•
Fishfinder (NavNet BB Fish Finder required)	•	•	•
Loran TD display	•	•	•
Advanced TD correction	•	•	•
Advanced unlimited simultaneous user data layer access	•	•	•
Track recording with coloring using input data	•	•	•
Advanced event recording	•	•	•
Unlimited Waypoints & Routes	•	•	•
Worldwide Tidal Data (tidal height)	•	•	•
Navigation Logbook	•	•	•
Weather and Oceanic data Overlay	•	•	•
Chopper: geographic requester for data in GRIB format	•	•	•
Simultaneous 2 dimensional (2D) and 3 dimensional (3D) electronic chart	N/A	•	•
Personal Bathymetry Generator (PBG)	N/A	•	•
Mobiles Target Tracking (ARPA, AIS, GPS Buoys)	Optional	Optional	•
Minimum Keyboard Display (MKD) AIS data upload and Short Message Service (SMS) software module	Optional	Optional	•
Sailing Performance Module	Optional	Optional	•
Weather Routing Module	Optional	Optional	•
MaxShell Windows Desktop Manager Software	Optional	•	•
Multi monitors and Network compatible	•	•	•
One MapMedia bathy Data chart area	Optional	•	•

SYSTEM REQUIREMENTS

Your PC must meet the following system requirements in order to work with MaxSea-NavNet. Please verify these requirements before installing.

- ▶ Windows 2000 sp3 or XP sp1
- ▶ 1 GHz processor (faster recommended)
- ▶ CD-ROM drive – for installing MaxSea-NavNet
- ▶ Serial or USB port – for connecting NavNet and hardware key (dongle)
- ▶ 700 MB of hard drive space
- ▶ 3D graphic card: 32 MB (64 MB recommended) Fully compatible with DirectX 9.0
- ▶ Network facility: Ethernet 10/100 Base TX
- ▶ Memory requirements: 256 MHz

Note:
For the best performance we advise you follow the 'recommended' guidelines. MaxSea-NavNet is an advanced software program which makes good use of faster computers with more memory.

INTERCONNECTION DIAGRAM



SPECIFICATIONS SUBJECT TO CHANGE WITHOUT NOTICE

FURUNO U.S.A., INC.
Camas, Washington, U.S.A.
Phone: +1 360-834-9300
Fax: +1 360-834-9400

FURUNO ESPAÑA S.A.
Madrid, Spain
Phone: +34 91-725-90-88
Fax: +34 91-725-98-97

FURUNO SVERIGE AB
Västra Frölunda, Sweden
Phone: +46 31-7098940
Fax: +46 31-497093

FURUNO FINLAND OY
Espoo, Finland
Phone: +358 9 4355 670
Fax: +358 9 4355 6710

FURUNO DANMARK AS
Hvidovre, Denmark
Phone: +45 36 77 45 00
Fax: +45 36 77 45 01

FURUNO (UK) LIMITED
Denmead, Hampshire, U.K.
Phone: +44 2392-230303
Fax: +44 2392-230101

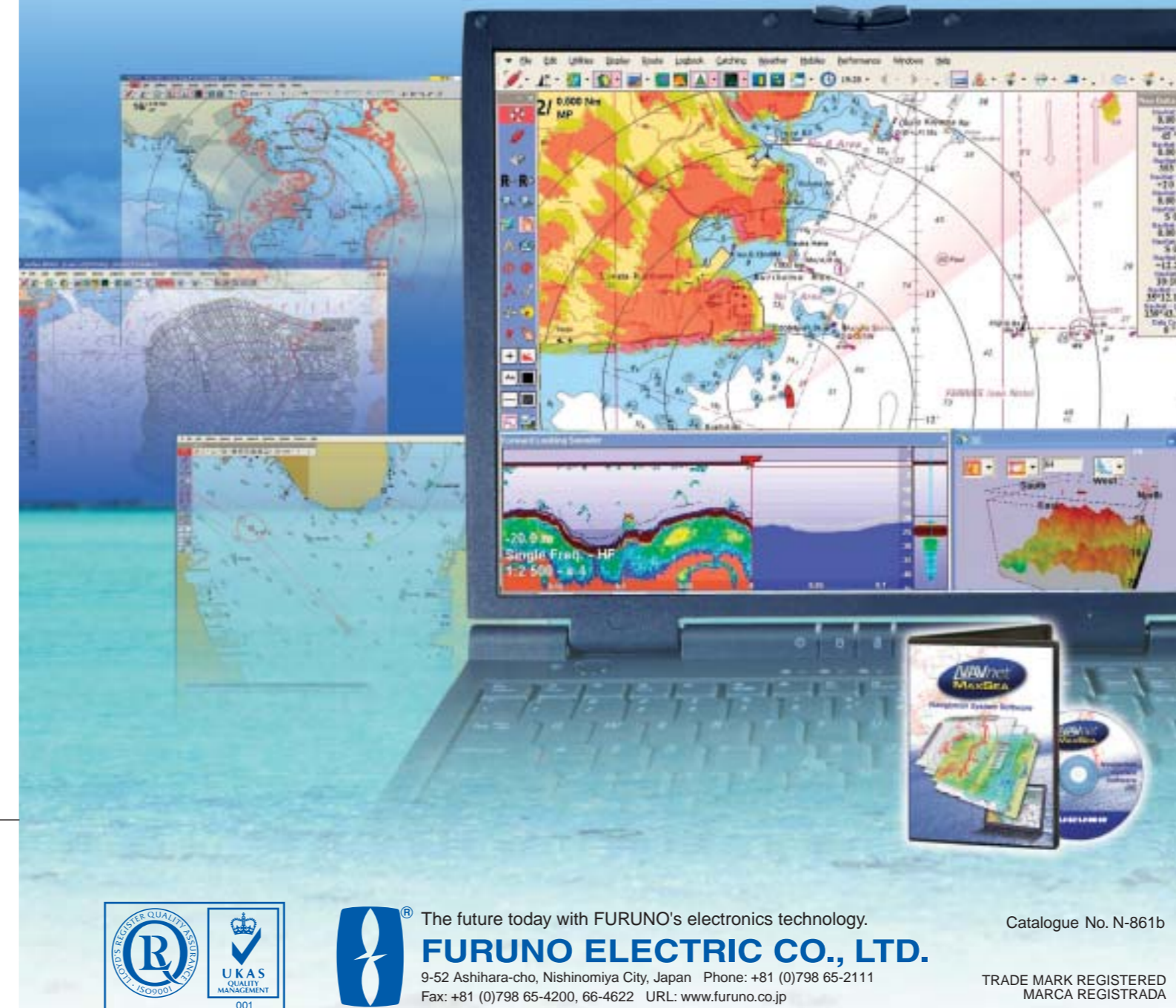
FURUNO FRANCE S.A.
Bordeaux-Mérignac, France
Phone: +33 5 56 13 48 00
Fax: +33 5 56 13 48 01

FURUNO NORGE A/S
Ålesund, Norway
Phone: +47 70 102950
Fax: +47 70 127021

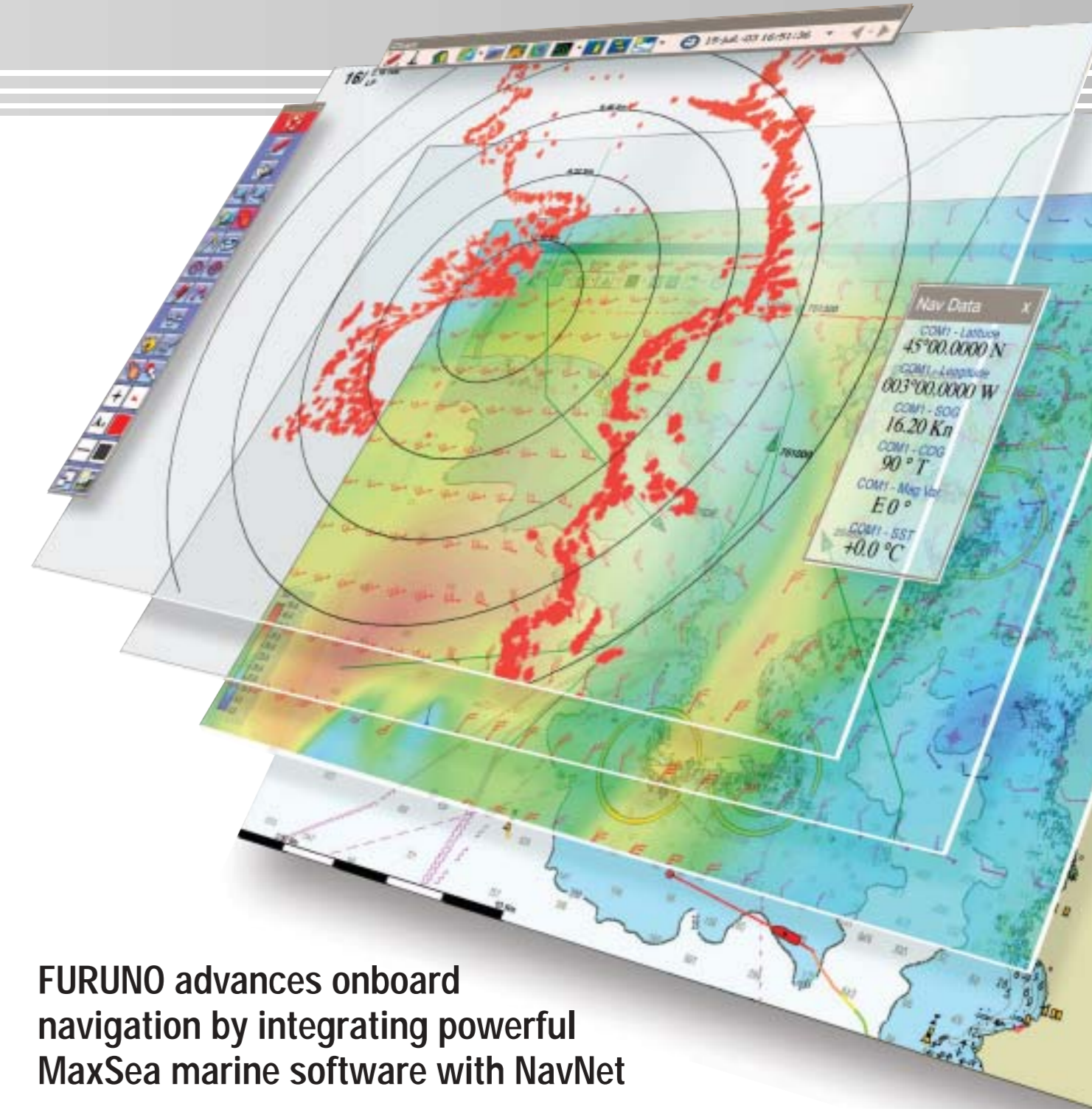
FURUNO POLSKA Sp. z o.o.
Gdynia, Poland
Phone: +48 58 669 02 20
Fax: +48 58 669 02 21

PRINTED WITH SOYINK 05055U Printed in Japan

Navigation System Software



FURUNO



FURUNO advances onboard navigation by integrating powerful MaxSea marine software with NavNet

Running on the cutting-edge of applied information technology, the MaxSea-NavNet software is powerful navigation software for all boaters who have been looking for a user-friendly interface and a more comprehensive navigation tool.

The MaxSea-NavNet software offers increased efficiency at sea by using its exclusive capabilities, including seamless chart displays, advanced weather forecast overlay, real-time three dimensional images of the seabed (Personal Bathymetric Generator) and many more. Intuitive operation of MaxSea-NavNet is achieved by its user-friendly interface and graphical tool palette. MaxSea-NavNet presents the ultimate solution to navigational data management.

There are three editions of MaxSea-NavNet available: Commander, Explorer and Professional. Each serves specific purposes for a variety of boaters. Commander has powerful tools for recreational cruising and other marine leisure activities. Explorer features practical fishing tools such as PBG, which greatly assists in professional fishing. Professional includes AIS

capability and a sophisticated route-planning tool for commercial as well as ocean-going ships. In addition, each tool can be added on later to customize navigational packages.

- ▶ **Sharing all the navigation data within the NavNet network**
NavNet provides MaxSea-NavNet with radar, fish finder and weather facsimile images, as well as the entire range of essential navigation data from various network sensors. C-Map chart data from the NavNet display can also be display on a PC utilizing MaxSea-NavNet.
- ▶ **Full controllability of the NavNet**
MaxSea-NavNet takes full control of the NavNet display, such as radar range, gain/STC control, etc., in addition to handling the navigation data which can be displayed in a variety of formats.
- ▶ **2D/3D ground discrimination function allows boaters to see MaxSea 2D/3D charts**
- ▶ **ARPA radar target tracking capability**
- ▶ **AIS transponder compatibility**



The future today with FURUNO's electronics technology.
FURUNO ELECTRIC CO., LTD.
9-52 Ashihara-cho, Nishinomiya City, Japan Phone: +81 (0)798 65-2111
Fax: +81 (0)798 65-4200, 66-4622 URL: www.furuno.co.jp

Catalogue No. N-861b

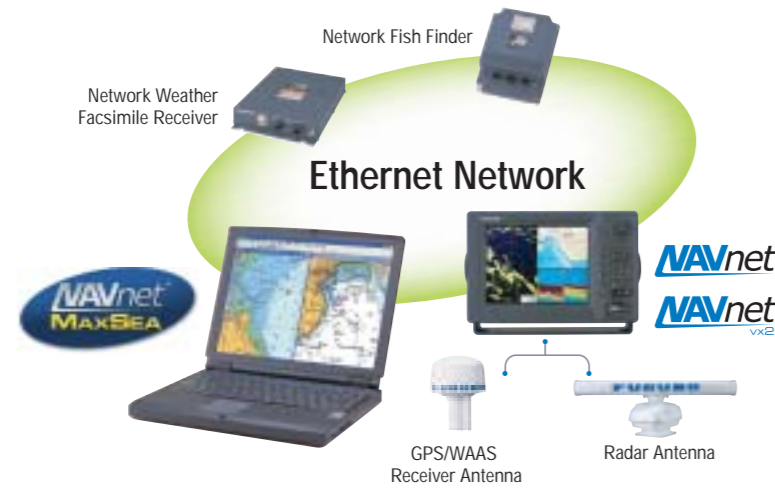
TRADE MARK REGISTERED
MARCA REGISTRADA

Features

Interface with the NavNet system

The MaxSea-NavNet software is capable of interfacing with a NavNet system to gather data from all of the network sensors. Get GPS/WAAS positioning, Fish Finder or Depth Sounder data and Radar targets. You can even utilize your current C-Map chart card library directly from NavNet's high-speed Ethernet network.

MaxSea-NavNet allows you to take full control of your NavNet display, such as radar range, gain, sea clutter control and more. You can also plan your routes and waypoints in advance on your PC and transfer them easily to your NavNet.



Compatible with a latest C-Map NT MAX charts

When interfaced with NavNet, MaxSea-NavNet can utilize chart data used in a NavNet network. The latest C-Map NT MAX charts provide a variety of unique functions for safety and efficiency of your boating. The features include live navigational aids, tidal flows, local street maps and photographs of harbors.



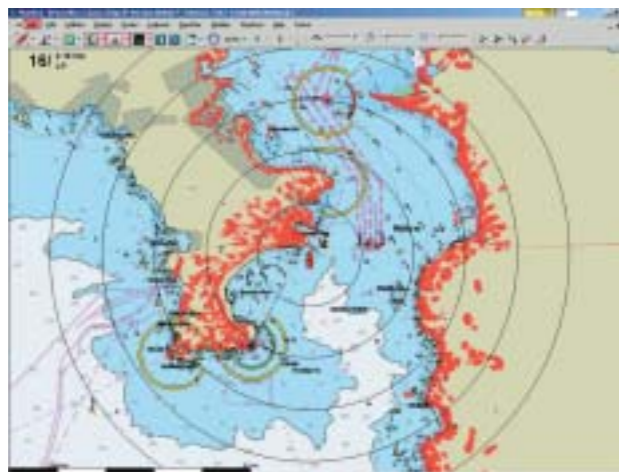
MaxSea-NavNet's advanced chart management system seamlessly displays the best chart available for any scale, and provides flexible over-zoom and under-zoom capabilities so that you can gain valuable navigation information and concentrate on boating activities. There is no need to open and close files while cruising.



MaxSea-NavNet radar overlay

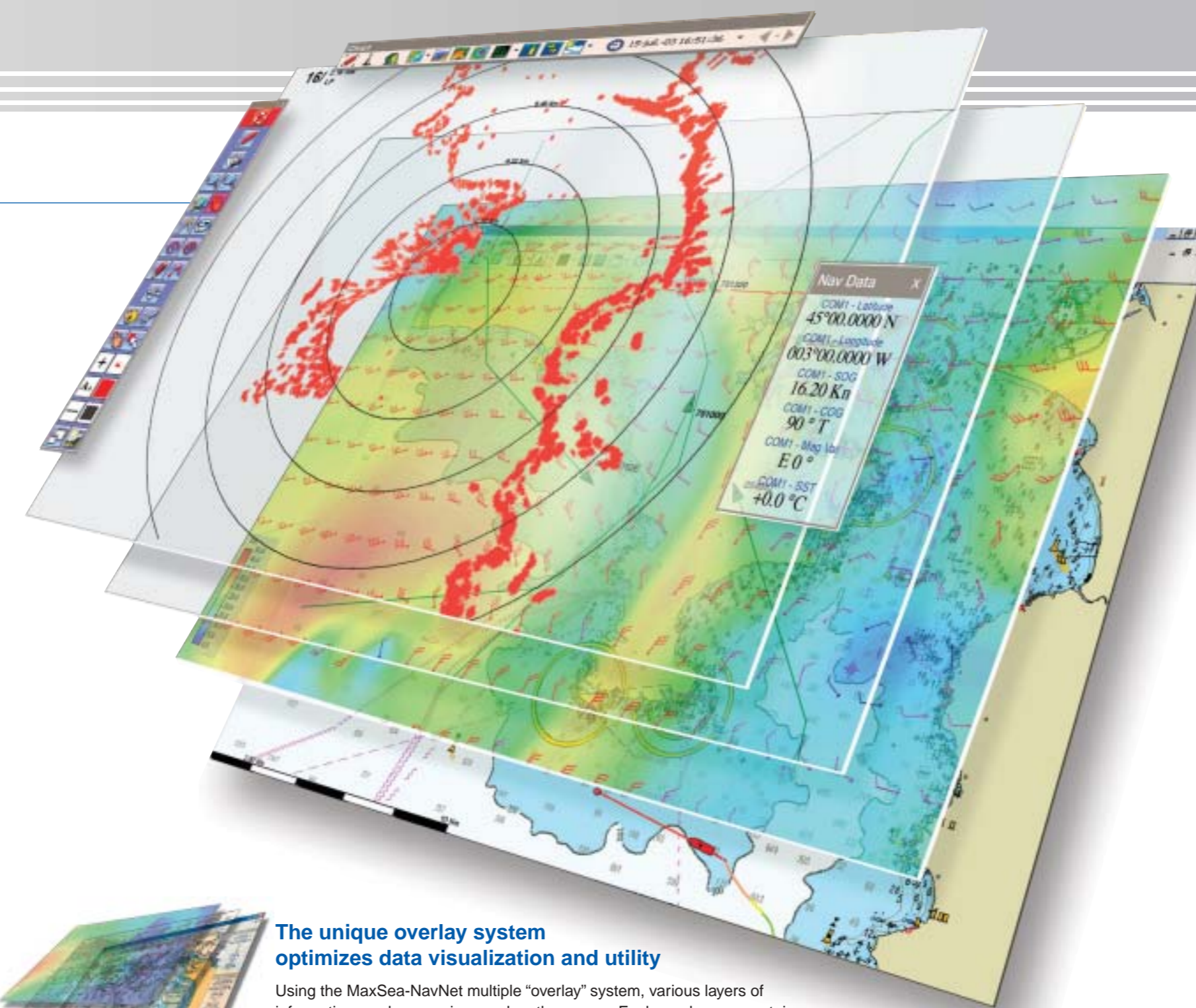
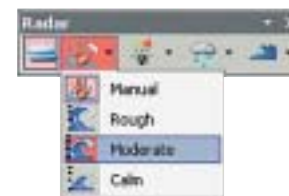
MaxSea-NavNet provides the highest quality electronic charts available as the basis for its radar overlay. MaxSea-NavNet overlays the full radar image at the same scale and creates a dramatic improvement in accuracy and clarity.

MaxSea-NavNet radar overlay gives you amazingly detailed images. The color and transparency level of overlay guarantee that the chart is not hidden. This allows for the confirmation of precise positioning relative to the chart and clearly reveals any inconsistencies.



Radar tool palette

With MaxSea-NavNet, you can bring NavNet network information directly on your PC. Independent of NavNet system, the information can be adjusted separately from your own PC to display it clearly.

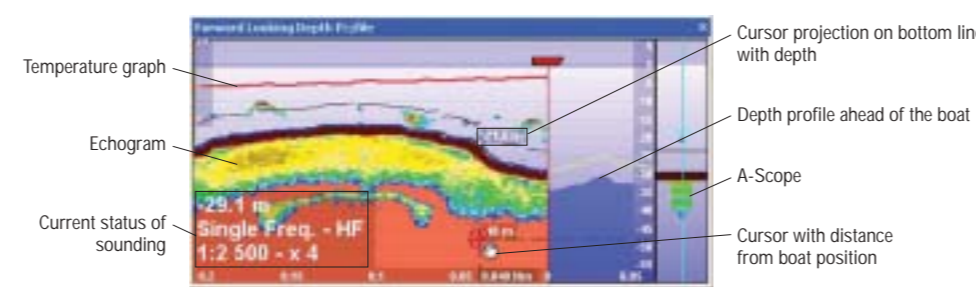


The unique overlay system optimizes data visualization and utility

Using the MaxSea-NavNet multiple "overlay" system, various layers of information can be superimposed on the screen. Each overlay can contain different types of data, such as tracks, marks, hazards, wrecks, pots, currents, water temperature, radar targets, depth sounder data, and more. Based on your needs at the moment, a single click can make each layer either visible or invisible — eliminating irrelevant information and clearly showing only the data you require.

Fish Finder display

The fish finder display shows detailed fish and seabed echo images from the NavNet's with the high performance, professional fish finder ETR-30. This also further ensures safe navigation by helping you locate sand banks and rocks. When the PBG module is active, it offers realtime updates of bathymetric data in 2D/3D.



Temperature graph
Echogram
Current status of sounding
Cursor projection on bottom line with depth
Depth profile ahead of the boat
A-Scope
Cursor with distance from boat position

Add-on Modules

With specific add-on modules you will be able to build a software package that meets your specific needs.

Advanced ARPA and AIS Mobile Target Tracking

MaxSea-NavNet's Mobile Target symbols are clearly displayed on precise charts with heading vectors. Trails and heading vectors clearly show the past and the expected routes. MaxSea-NavNet's unique graphic display of CPA (closed point of approach) on the chart immediately notifies you of potential approaching danger.

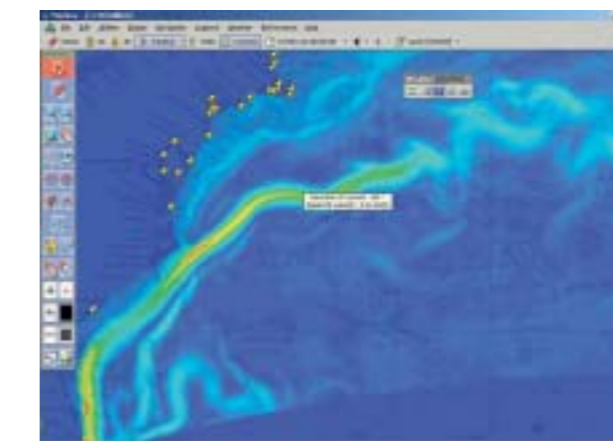
MaxSea-NavNet's Mobile Centers detail all available information about all targets. Data includes Maritime Mobile Service Identity (MMSI), speed and heading, radius of gyration, size and types of the vessel, etc. You can easily sort a long list that might be created in areas of heavy traffic and select targets from it. Being able to view only relevant information in these tense situations is an invaluable tool for fast, efficient, and safe decision making.

- | | |
|------------------|------------------------|
| 1 Course | 5 Own ship's track |
| 2 Waypoint | 6 AIS equipped targets |
| 3 Heading vector | 7 Target's track |
| 4 Own ship | 8 Targets list |



2D/3D Module

The 2D/3D Module has the ability to seamlessly display both raster and vector charts from many sources, allowing you to use the best charts available anywhere you are. The ability to overlay sea surface temperature and altimetry directly onto the charts together with an incredibly accurate 3D display of the bottom contour and structures minimizes the time it takes to find where the big game fish are likely to be feeding.

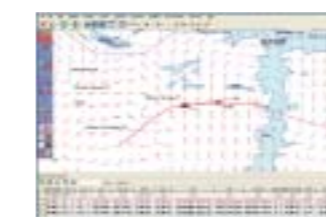


Favorite temperature differentials and currents are clearly displayed in color on your chart.

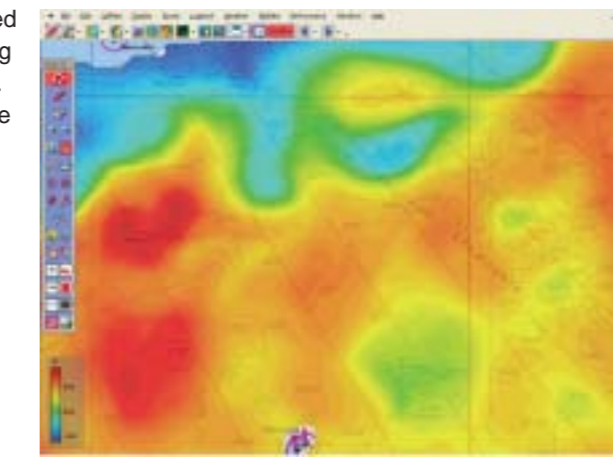
Free up-to-date Ocean Conditions & Weather Forecasts

Ocean and weather information forecasts are requested through MaxSea's exclusive chopper interface, allowing you to receive data via compressed e-mail at any time. You can overlay the data onto your charts as a valuable aid for course planning.

Data such as sea surface temperature, wind, waves, 500 mb pressure, altimetry, etc., for the whole world is available.



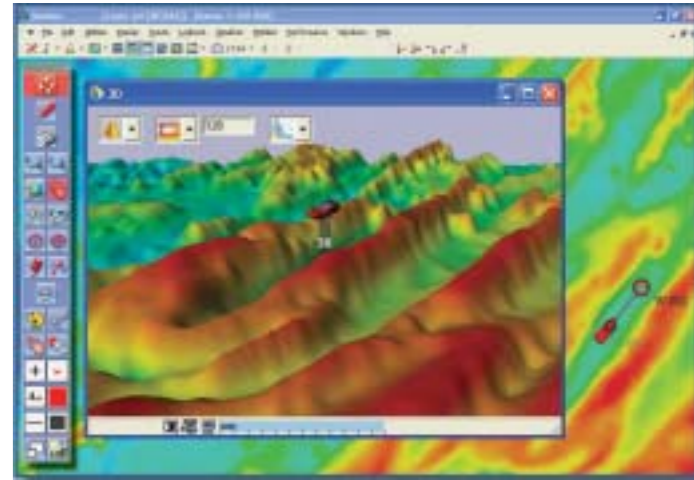
Weather map



Altimetry display

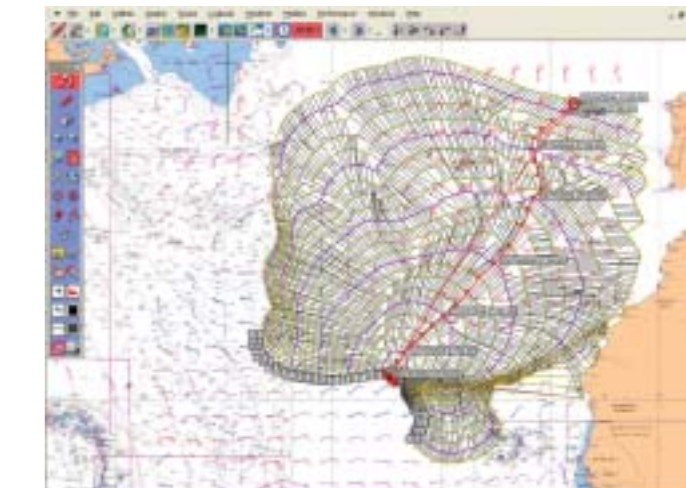
Personal Bathymetry Generator (PBG) clearly shows the contours of the bottom

Connected to the network fish finder and a GPS navigator, MaxSea-NavNet PBG records the position and the depth as your boat proceeds, which enables you to create 2D and 3D charts with pinpoint accuracy in real-time. With a single click, MaxSea-NavNet PBG will be activated to give comprehensive real-time 2D and 3D images of the seabed. You can now find previously unknown pinnacles and obstacles where bait fish collect, without wasting time guessing.



Weather Routing Module

The Weather Routing Module is the most advanced on-board weather routing system available. Since 1986, every winner of the Volvo Around the World/Whitbread, BOC and Vendee Globe Races has used this powerful tool to help them win. The MaxSea-NavNet uses weather forecasts and the performance characteristics of your individual boat to calculate the fastest way to reach your destination.



The Weather Routing Module is not only for racing applications, but also aids cruising sailors in navigating safely by avoiding strong winds.

MaxShell Module

MaxShell delivers the awesome power of the MaxSea-NavNet PC-based navigation wrapped in plotter-like simplicity, by insulating you from the unfriendly eccentricities of the Windows operating system. MaxShell insures simplicity, reliability, automatic backup and security.

Sailing Performance Module

The Performance Module adds powerful tools for sailing vessels, including upwind and downwind laylines displayed on the chart (continuously corrected for changes in true wind direction and current), and advanced manipulation of performance data. It not only gives you the information you need for optimal sailing but also the ability to accurately predict upcoming conditions based on the analysis and identification of trends in wind speed, wind direction and barometric pressure.

